

A  
L  
I

Solutions...



## LABORATORY INFORMATICS SOLUTIONS OVERVIEW

*“One of the biggest problems I have to solve this year is the change to electronic data capture, reporting and witnessing – of course all compliant!”*

- CAPTURE
- ANALYSE
- REPORT
- WITNESS
- SECURE
- ARCHIVE

The way forward is electronic. So where do I start?

ALIS GmbH will guide you through a maze of different vendors with overlapping functionality and widely differing price structures to find an optimum solution which meets your key requirements.

One option could be a cost-effective system based around one of the most trusted names in Electronic Document handling with a track record second-to-none in keeping paper-equivalent electronic records secure and long-term readable.

Add a flexible customer-oriented innovative provider of interfacing software to cover the capture of your numerical information from everything from balances to spectrometers and you have the perfect combination to present to your line management.

**Best-of-breed solutions rarely come from the same source twice!**

For details see overleaf...

Please call for a free initial consultation

Beethovenstrasse 4  
48249 Dülmen, Germany  
phone: +49 2594 916086  
e-mail: [Info@alis-consult.com](mailto:Info@alis-consult.com)  
[www.alis-consult.com](http://www.alis-consult.com)



## CAPTURE

Adobe Forms are now capable of automated data import. Filling in balance values from networked balances captured by Agaram LogiLab<sup>PRO</sup> systems for example. This, combined with the secure, long-term stable archiving capabilities of the PDF formatted document makes it an excellent choice to replace conventional paper-based workflows within your environment.

## ANALYSE & REPORT

With Forms it is now possible to add graphical fields displaying the analytical data. Additionally, the actual analytical data files can be securely attached to the PDF documents. This facilitates later analysis by the original application or third-party software. In our example the data has been migrated to a standard IUPAC JCAMP-DX format. The attachments open directly out of the archived PDF file into the LabCognition Panorama software for re-analysis.

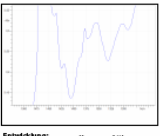
Auftragsnr.:	Charge:
Analysenauftrag: Regist. No.:	Laborauftragsnr. / ILO:
Produkt:	
Laborstufe:	

Seite 1 von 1

Anfrage: Dünnschichtchromatografie

Prozess:

PV-Nr.: \_\_\_\_\_ Mappen-Nr.: \_\_\_\_\_ Dok-Nr.: \_\_\_\_\_




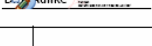
Einwaagebuch: \_\_\_\_\_

Entwicklung: Kammerfüllung:  ja  nein  
 Laufstrecke: ca. \_\_\_\_\_ cm  
 Laufzeit: ca. \_\_\_\_\_ min

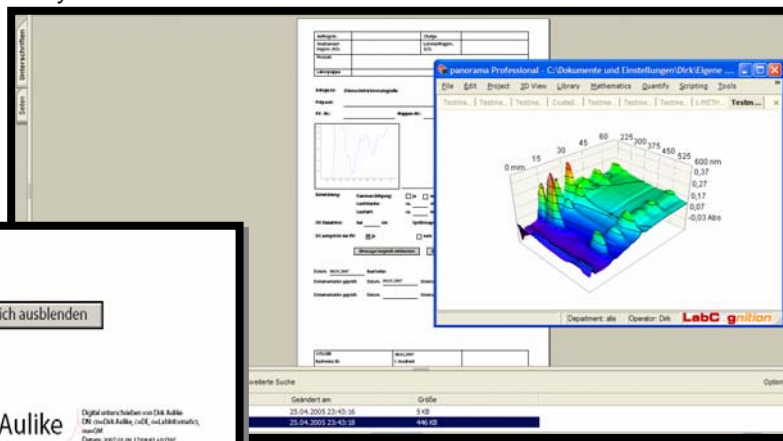
UV-Detektion: bei \_\_\_\_\_ nm Synthesegenz: \_\_\_\_\_

DC entspricht der PV:  ja  nein

Nr.	Charge	Analysen-Nr.	Einwaage der Probe	RF-Werte
1334	4	15		

Datum: 08.01.2007 Bearbeiter: \_\_\_\_\_  
 Dokumentation geprüft: Datum: 09.01.2007 Unterschrift:   
 Dokumentation geprüft: Datum: \_\_\_\_\_ Unterschrift: 

SYDUSER 08.01.2007  
 Nachweis ID: 1\_A000000



DC entspricht der PV:  ja  nein

Datum: 08.01.2007 Bearbeiter: \_\_\_\_\_  
 Dokumentation geprüft: Datum: 09.01.2007 Unterschrift:   
 Dokumentation geprüft: Datum: \_\_\_\_\_ Unterschrift: 

## WITNESS/SECURE

Of course the PDF document format behind the eForms is fully compliant with the new electronic signature guidelines such as the German eSignature laws. The digital signature clearly shows when the document you are viewing has been changed since signing – and even will allow you to see the original version that was signed if required!

## ARCHIVE

And depending on your needs it is simple to make these signed PDF Forms with attached analytical data your standard input format into long-term archiving systems with features such as record retention periods, litigation hold etc such as the Agilent OL ECM system. Here the standard PDF filters can be used to extract company specific data and metadata for use as search keys to ensure that not only have you secured your information – but that you or your successors in 65 years will be able to find it again!

## ALIS GMBH

ALIS, or Analytical Laboratory Informatics Solutions, was founded to provide consultancy and advisory services drawing on the talents of some of the worlds most experienced exponents of Laboratory Informatics. The core team draws on over 20 years of innovative problem-solving and consensus building. Through our network of partners and associates we can offer you targeted advice, consulting and solutions which fit yours needs – with access to best-in-class products.

Our advice will target your needs. By studying your laboratory IT environment, understanding your problems, and using standard components from the most appropriate provider that will meet your needs we will ensure you have the most cost-effective and lean solution to ensure you maximize your return-of-investment.



Silver  
Solution Partner  
EMEA 2007

**AGARAM**  
WE SPEAK YOUR LANGUAGE

**LabCognition**  
Analytical Software GmbH & Co. KG